

# Active Crystals

**PHILIPS** | SWAROVSKI

**BREEZE**  
FASHION HEADPHONES

## FASHIONABLE PENDANT FOR WIRELESS CALL Bluetooth Mono Headset

Functionality at its ultimate. Fantasy at its brightest. From now on, a sensational connection between Philips and Swarovski brings technology to new heights of enjoyment. Its name, Active Crystals.

### FINEST BEAUTY

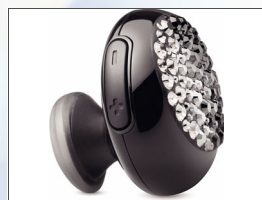
- Fully faceted, exclusive cut Silver Shade crystal dome

### PREMIUM SOUND PERFORMANCE

- Customised crystal design for unparalleled acoustics
- Perfect in-ear seal blocks exceptional noise
- The precise design directs high definition sound

### ULTIMATE WEARING COMFORT

- ultra-soft silicon caps sit comfortably in your ears
- This ergonomic design will fit perfectly into your ear canal



## PHILIPS AND SWAROVSKI

### FASHION HEADPHONES – BREEZE SWB9000/27

#### SPECIFICATIONS

##### PACKAGING DIMENSIONS

- Packaging dimensions (W x H x D):  
9.5 x 7.6 x 9.6 cm
- Nett weight: .015 kg
- Gross weight: .185 kg
- Tare weight: .17 kg

##### OUTER CARTON

- Outer carton (L x W x H):  
41.6 x 22.2 x 22.4 cm
- Nett weight: .24 kg
- Gross weight: 4.044 kg
- Tare weight: 3.804 kg

##### INNER CARTON

- Inner carton (L x W x H):  
21 x 20.4 x 10 cm
- Nett weight: .06 kg
- Gross weight: .913 kg
- Tare weight: .853 kg

Issue date 2008-08-19  
Version: 1.0.7  
12 NC: 8670 000 40579  
UPC: 6 09585 15635 7

© 2008 Koninklijke Philips Electronics N.V.  
and Swarovski AG. All Rights reserved.

Specifications are subject to change without  
notice.  
Trademarks are the property of Koninklijke  
Philips Electronics N.V., Swarovski AG or their  
respective owners.

[www.active-crystals.com](http://www.active-crystals.com)